

DESCRIPTION OF THE MALE OF POLYPTYCHUS NUMOSAE (WLLGR.)

By C. J. SWIERSTRA, First Assistant.

Plate XXXV, figure 2.

WHEN Mr. A. J. T. Janse first showed me the single male specimen in his collection I took it to be a new species, but when comparing the specimen with the description of the female of *P. numosae* (Wllgr.) it turned out to be the male of that species. As the male seems to be undescribed and the figure of the female in Distant's *Insecta Transvaaliensia*, described as *P. consanguineous* Dist., seems to be a very poor reproduction of the female, I thought it not superfluous to describe and figure this male. The reproduction is almost perfect, although the linear markings of the forewing are a little too prominent, as are also the linear markings on the underside of both wings.

Body and legs greyish fawn coloured; head and thorax with a central longitudinal chestnut stripe.

Forewing: Greyish fawn coloured, paler towards the outer margin, two black dots near base, with three indistinct, almost straight, lines just beyond them, of which the first crosses base of cell and the other two, near together, cross about middle of cell. A fairly regular dentated brownish black line across the middle of the wing, beyond this line three indistinct dentated striae which are about equi-distant. The whole wing is covered with chestnut brown speckles.

Hindwing: Brick-red, darker at base, lighter towards outer margin. A dark chestnut spot at anal angle. Above this spot and parallel with outer margin is a streak, just above and a little beyond the anal spots, where it is broad and of a dark chestnut colour; when past these spots it abruptly narrows and is only a little darker than ground colour. The area between this streak and outer margin is greyish, sparsely speckled with light chestnut.

Underside: Forewing, basal half reddish, outer half lighter, turning to greyish towards hind margin, covered with brownish speckles. Three curved reddish brown indistinct striae; the first above middle, the second, which is almost obsolete, nearer to third, which is slightly dentate (not brought out in figure).

Hindwing: Greyish-pink with the entire wing covered with chestnut speckles. Two curved brownish striae crossing wing, of which the first, just before middle, is more distinct than the second, which is nearer hind margin. Space between the two striae darker than the rest of the wing. At anal, on either side of the second striae, are two short striae of the same colour as the others. The upper one of these two short striae indistinct.

Cilia: Brownish, white at the tips between the veins.

Habitat: One male from Warmberg, 7th January, 1904. (A. J. T. Janse).



Fig 1.

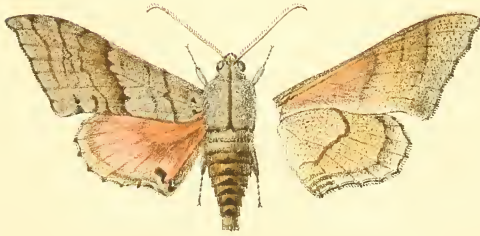


Fig. 2.

Plate XXXV.

Fig. 1.—*Leptoneura janssei* Swierstra.
Fig. 2.—*Polyptychus numosae* (Wllgr.)

Jansse del. et nat.